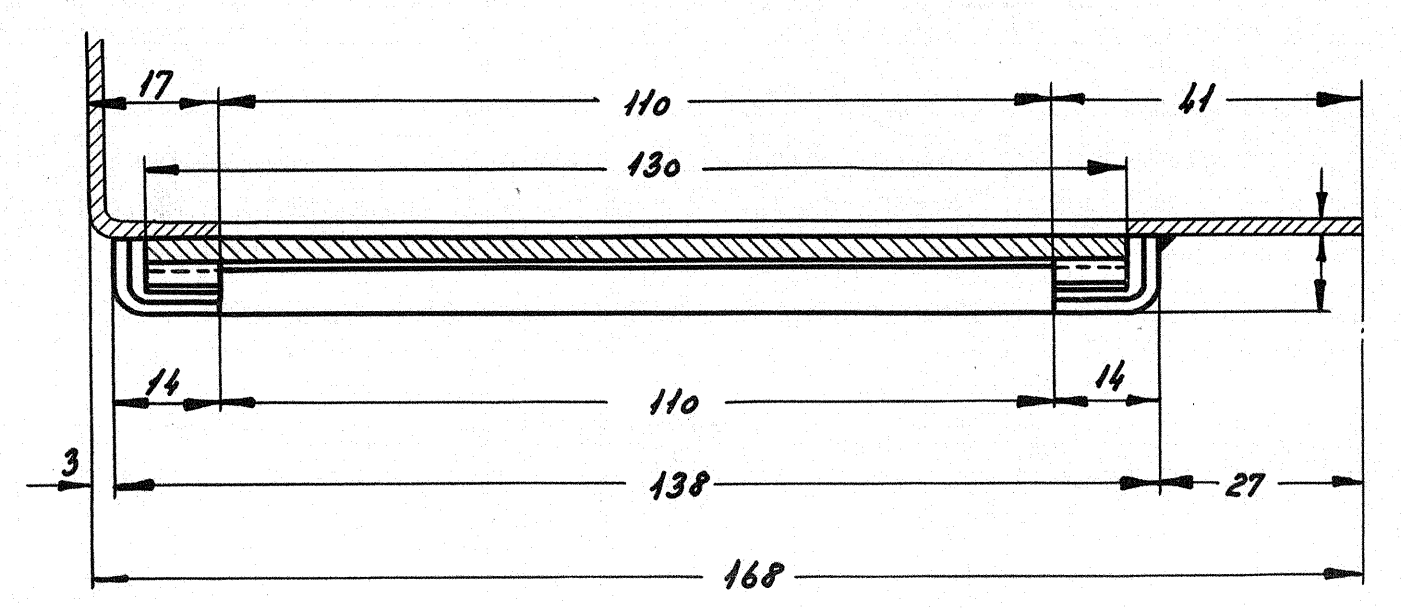
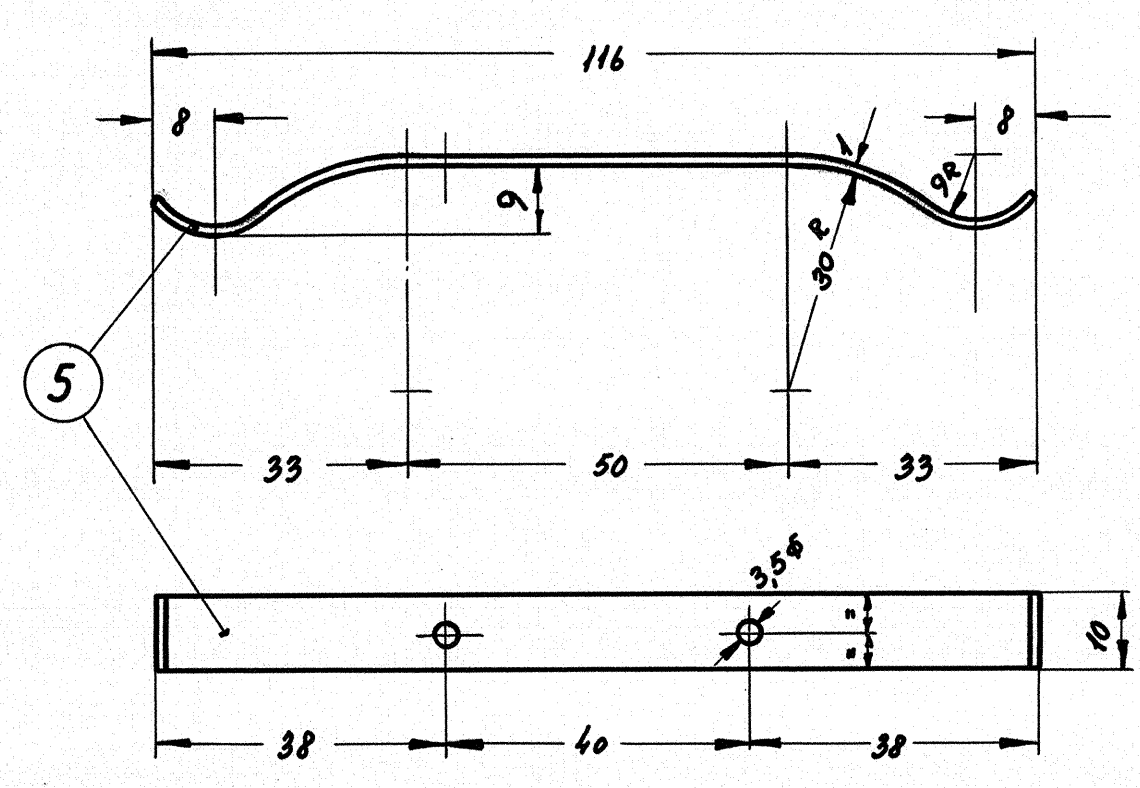
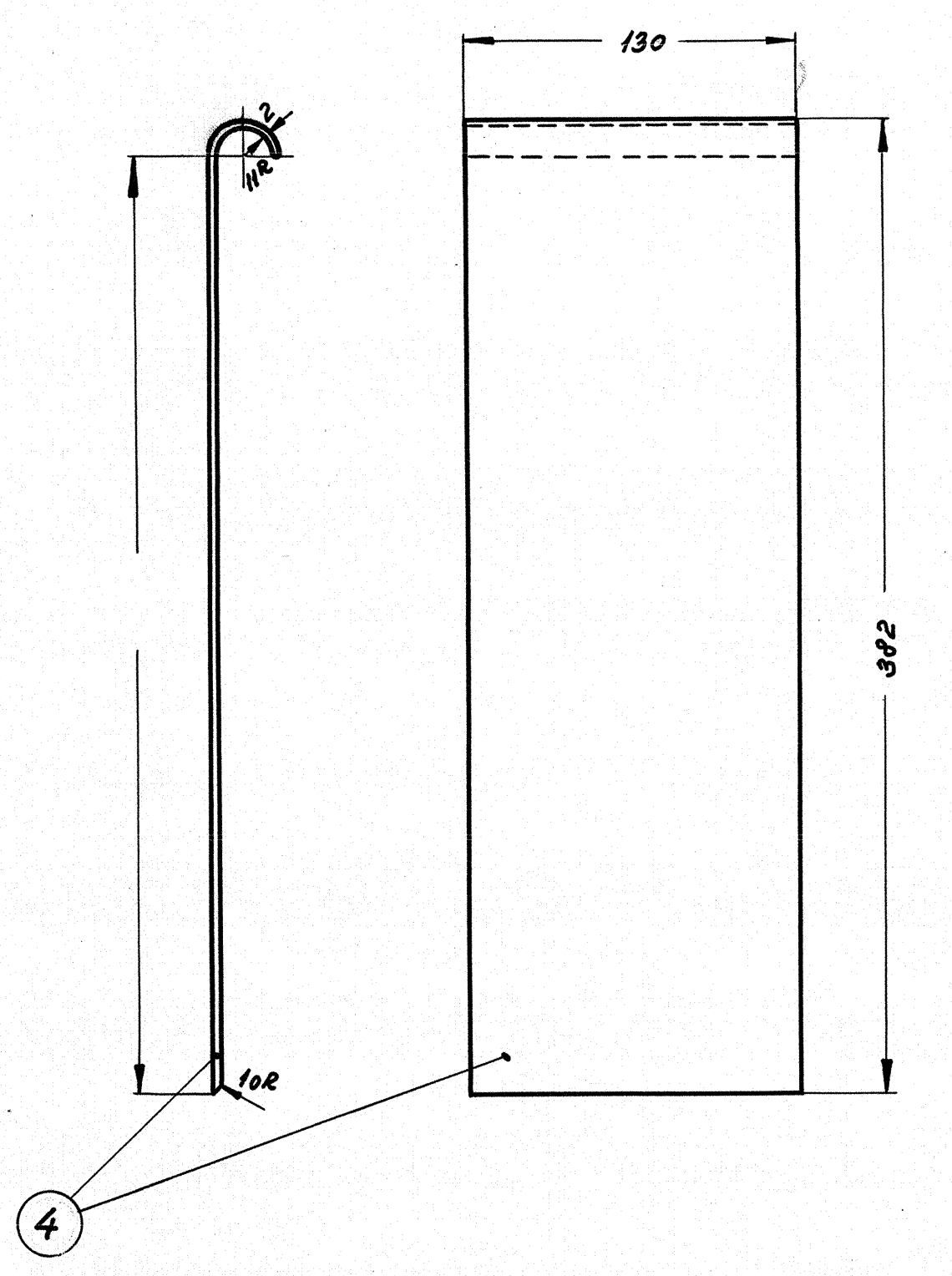
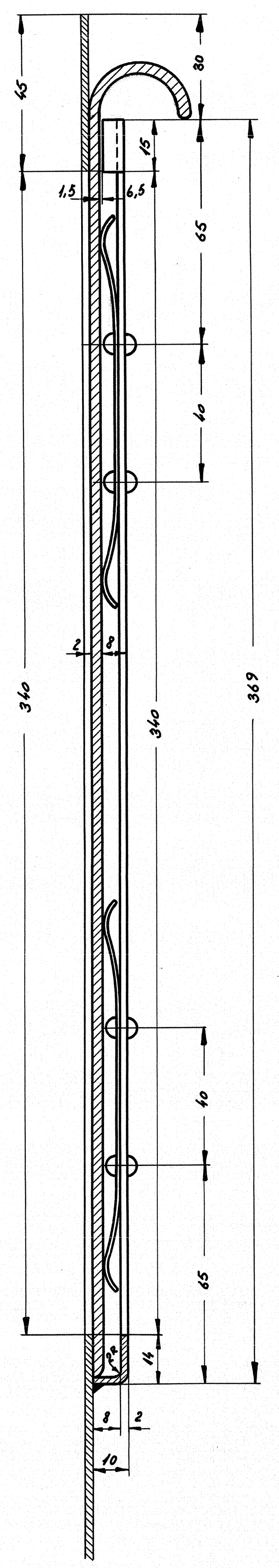
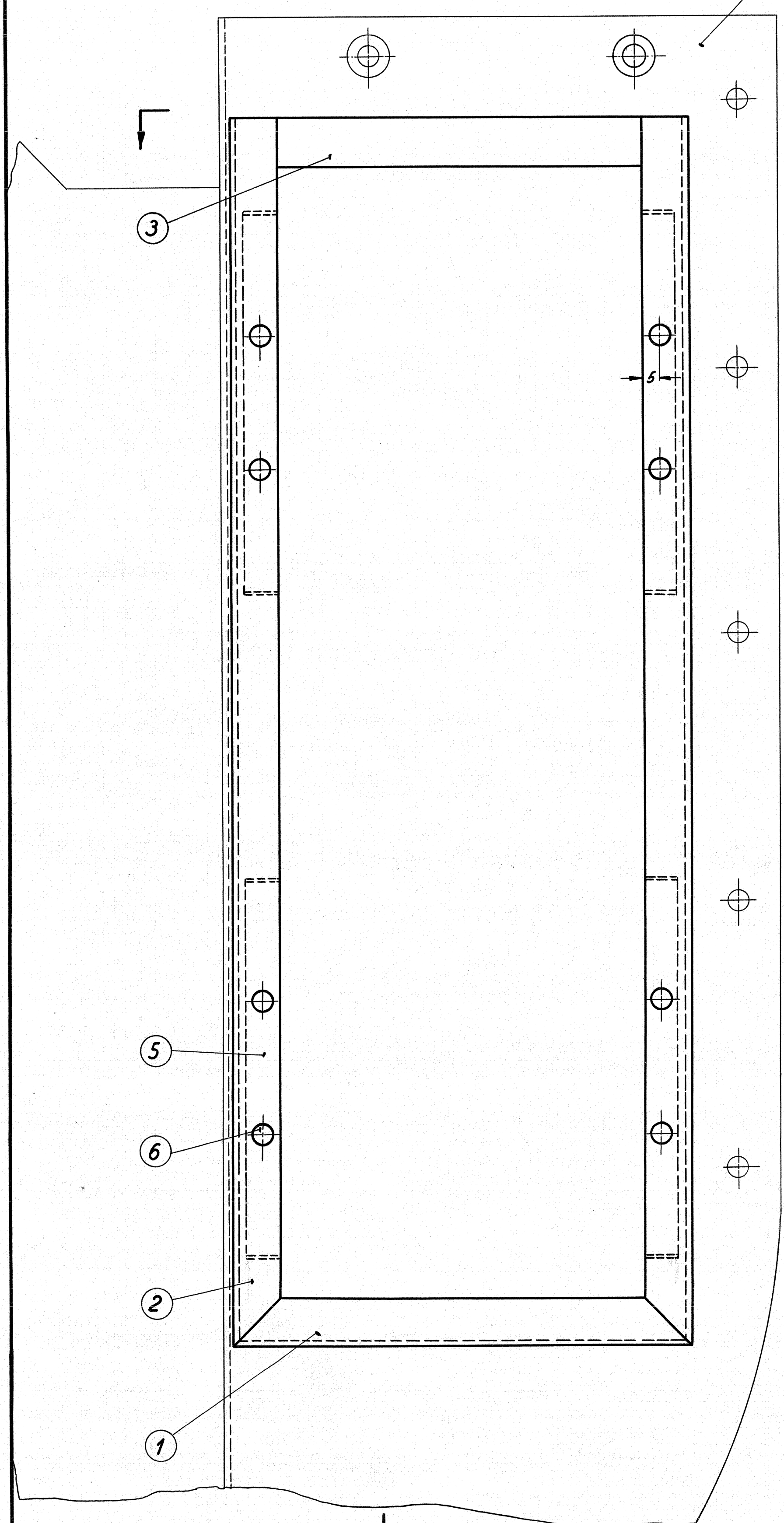


Plade til luftkanal mellem hoveddynamo og samlekasse, 18W-21.813/1



16	Nitte m. rundt hv. 3 ϕ x8	6	st. 34	magasin	
8	Fjeder, 10x1x140	5	fj. st.	10x1x1200	
2	Lem, pl. 40 ϕ x130x2	4	st. 00	420x280x2	
2	Fladjern 15x6,5x110	3	st. 00	fj. 15x6,5x240	
4	Ramme, vj. 14x10x2x369	2	st. 00	fj. 20x2x1720	
2	Ramme, vj. 14x10x2x138	1	st. 00		
Stk.	Belegning	Pos.	Materiale kvalitet	Model nr. eller materiale størrelse	raa i færdig vægt/stk.
Tegn. 15.9.53. FM	Rev.	Ans. J.L.	Maalestok: 1:1; 1:2,5		
Kont. J.H. 17-4-53	Norm.	Dato			
Dato	Relevante	Indeks	FRICHS		
Anvendelse					
Diesel-el. 500/550 hk motorvogn			Stylistenr. 13732		
Tegningens benævnelse			Tegningens nummer		
Lem i luftkanal mellem hoveddynamo og samlekasse.			18W-21.814		